



 paulwallace

Netherhall Road, Roydon, CM19 5JP |
Offers in Excess of £849,995 | Freehold

Netherhall Road, Roydon, CM19 5JP

* 0.64 Acre Plot with over 5500 sqft of Property * 2900 Sqft Five Bedroom Detached House * 700 Sqft Office Space * 2000 Sqft Pool House / Bungalow, accessed via own drive with Potential for use as Separate Dwelling (subject to PP) * Offered Chain Free *

Over-looking greenbelt and approached via carriage driveway, this unique opportunity offers multi-purpose use to include a stunning five bedroom detached house, beautifully presented throughout with 2900 sqft of living accommodation, carriage driveway and magnificent, well-tended front and rear gardens.

The detached 700 sqft office building offers full consent as an independent office space with further potential to convert into garaging (subject to PP).

To the rear of the plot, the unfinished, fully consented 2000 sqft pool house is accessed via its own driveway and has potential for use as a separate dwelling or annexe (subject to PP).

Key features

- Over 5500 sqft of property
- Offered Chain free
- Five bedroom detached house, 2900 sqft
- Carriage driveway
- 0.64 acre plot
- Fully consented 700 sqft office space
- Pool house / bungalow, 2000 sqft with own drive and potential to convert into separate dwelling (stpp)
- Overlooking greenbelt



 paulwallace
estate agents

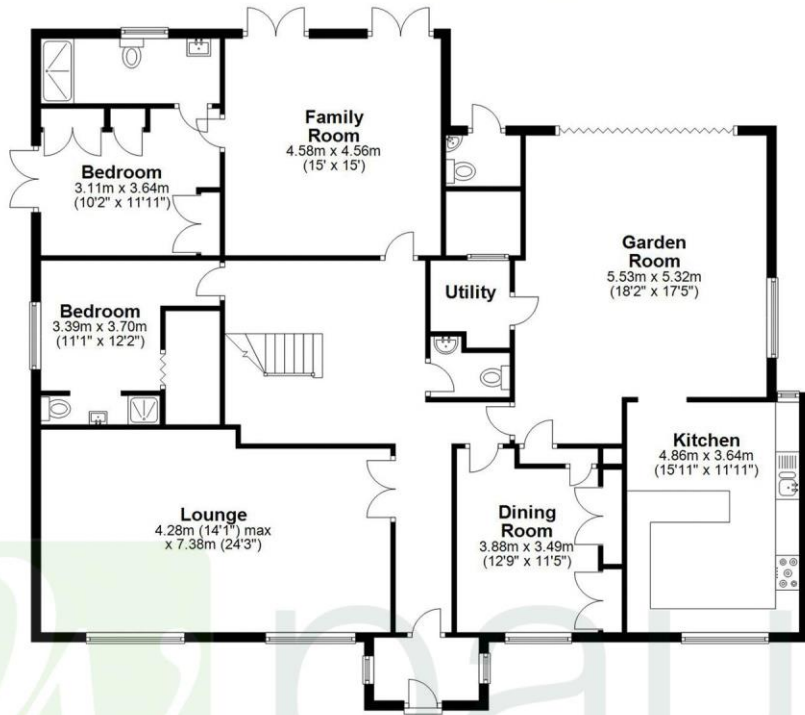
hoddlesdon@paulwallace.co.uk

01992 466471





Ground Floor
Approx. 198.1 sq. metres (2131.8 sq. feet)



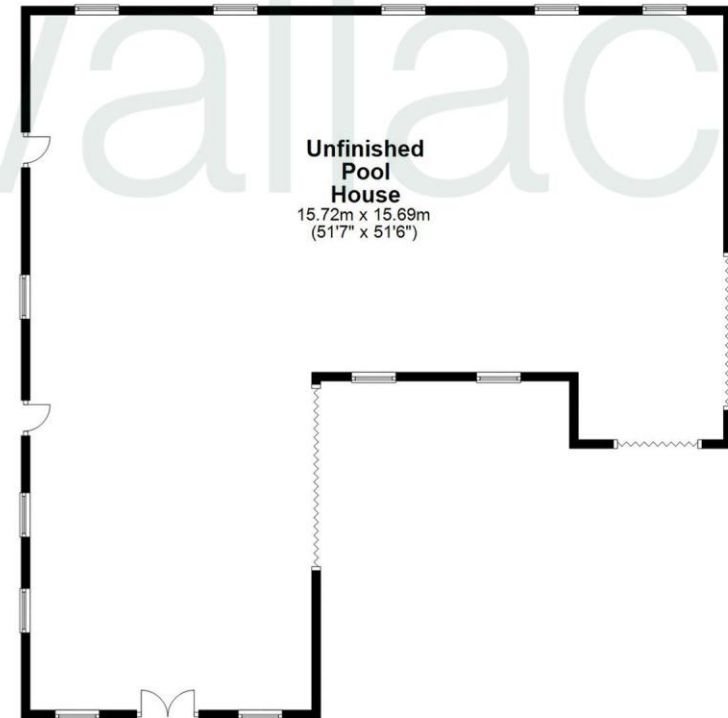
Outbuilding
Approx. 64.4 sq. metres (693.1 sq. feet)



First Floor
Approx. 71.6 sq. metres (770.7 sq. feet)



Outbuilding
Approx. 180.4 sq. metres (1942.0 sq. feet)



Total area: approx. 514.5 sq. metres (5537.7 sq. feet)

FOR ILLUSTRATIVE PURPOSES ONLY. NOT TO SCALE

Whilst every attempt has been made to ensure the accuracy of the floor plan shown, all measurements, positioning, fixtures, features, fittings and any other data shown are an approximate interpretation for illustrative purposes only and are not to scale. No responsibility is taken for any error, omission, miss-statement or use of data shown.






Paul Wallace Estate Agents

70 High Street
Hoddesdon
Hertfordshire
EN11 8ET

 01992 466471

 hoddesdon@paulwallace.co.uk

 www.paulwallace.co.uk



Opening Times

Mon	9am to 6.30pm
Tues	9am to 6.30pm
Wed	9am to 6.30pm
Thurs	9am to 6.30pm
Fri	9am to 6.30pm
Sat	9am to 5.00pm
Sun	Closed



Agents Note: Whilst every care has been taken to prepare these sales particulars, they are for guidance purposes only. All measurements are approximate and are for general guidance purposes only and whilst every care has been taken to ensure their accuracy, they should not be relied upon. Potential buyers are advised to recheck the measurements.